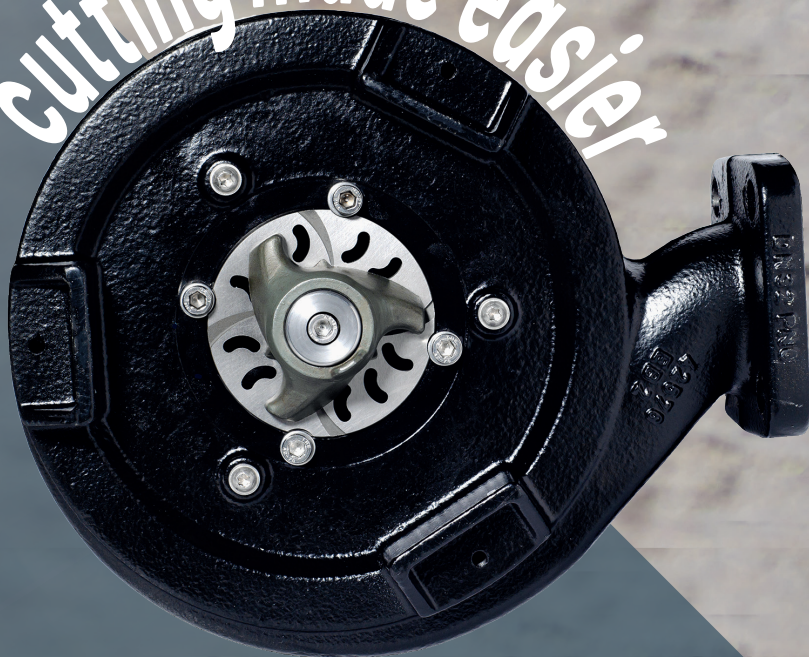




cutting made easier



MultiCut

SEWAGE PUMPS

MultiCut

For more than 35 years, MultiCut sewage pumps have been writing a success story with their reliable cutting system. Installed in numerous pump stations, they transfer waste water through the sewer system and play an essential role in residential and municipal waste water disposal.

Changing waste water

The increasing use of wet wipes and other hygiene products has changed the composition of waste water.

For years, providers of pump stations have repeatedly complained about failures and resulting repairs of sewage pumps. This situation does not only lead to annoyance, but also to extremely high municipal waste water costs.

The new cutting system

These changes in the waste water have prompted us to optimize the cutting system of the MultiCut pumps and adapt them to the more challenging environmental conditions.

Both the cutting rotor and cutting plate have been improved. The resulting cutting technology combines two types of cutting technique: scissor type cut + chop

► **Two cuts are made per hole now**

► **Now 200,000 cuts per minute (three times more compared to the previous cutting system)**

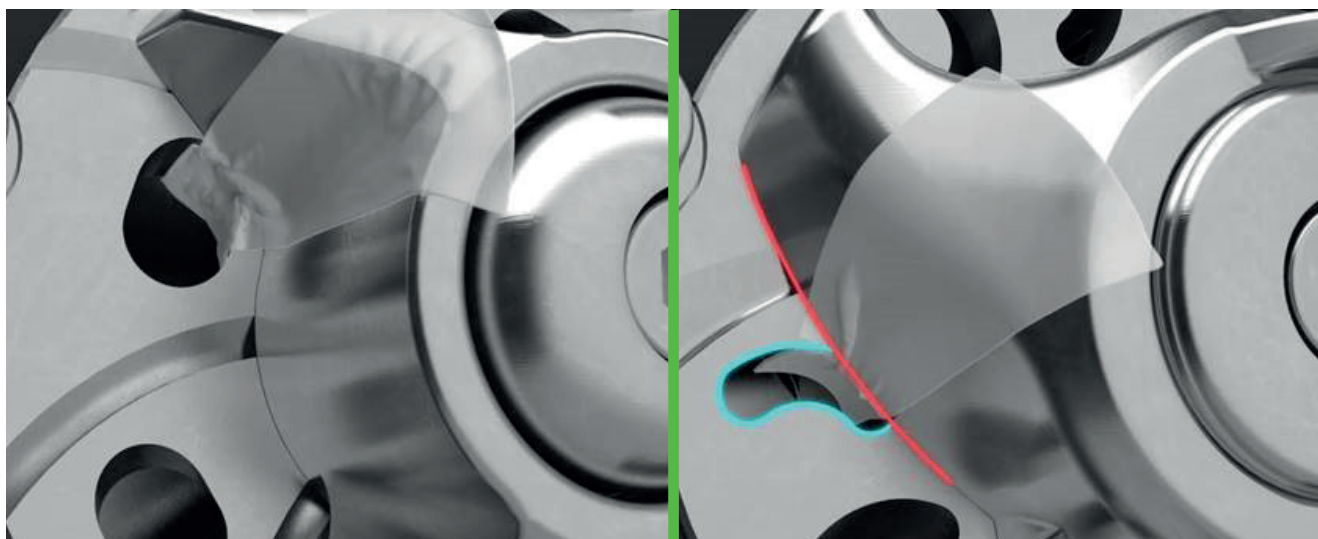
► **Improvements result in less service calls due to pump blockages**

Youtube-Video:
Watch the new
system in operation!



Proven technology remains!

The position of the cutting system is still in front of the pump hydraulics, ensuring that only shredded solids can enter the inside of the pump. This way the new MultiCut pumps continue to provide the well known quality.





Compatible with all previous models

Many pump stations are in operation for decades. Wear and tear is inevitable and some components have to be replaced from time to time.

Easy upgrade for existing pump stations

For existing pumps, the cutting system can be easily replaced by the new one (spare part). This way, these pumps are also prepared to handle the challenging conditions in today's waste water and shred the annoying solids reliably.

► Simple refitting of existing systems

► Disassembly tool for easy removal of the cutting system

Easy maintenance

A useful tool

The new disassembly tool enables convenient removal of the cutting rotor from the rotor shaft in order to replace the system or to re-adjust the cutting gap.



Technical details

Code No.	Material name	H max [m]	Q max [m³/h]	Voltage [V]	P ₁ [kW]	P ₂ [kW]	Current [A]	10 m cable pluggable
JP50342	MultiCut 08/2 ME	14,5	16,5	1/N/PE~230	1.37	0.98	6.0	H07 RN-F 6G 1.5
JP50343	MultiCut 08/2 MES	14,5	16,5	1/N/PE~230	1.37	0.98	6.0	H07 RN-F 6G 1.5
JP50344	MultiCut 08/2 M	18,5	18,5	3/PE~230/400	1.65	1.24	2.8	H07 RN-F 6G 1.5
JP50345	MultiCut 08/2 MS	18,5	18,5	3/PE~230/400	1.65	1.24	2.8	H07 RN-F 6G 1.5
JP50346	MultiCut 08/2 M, EX	18,5	18,5	3/PE~230/400	1.65	1.24	2.8	H07 RN-F 6G 1.5
JP50350	MultiCut 20/2 M PLUS	24	18	3/PE~230/400	2.40	1.91	4.0	H07 RN-F 6G 1.5
JP50356	MultiCut 25/2 ME	24	17	1/N/PE~230 V	2.70	2.04	12.0	H07 RN-F 6G 1.5
JP50357	MultiCut 35/2 M	35	16	3/PE~230/400	3.70	3.04	6.6	H07 RN-F 6G 1.5
JP50363	MultiCut 36/2 M	38	16	3/PE~230/400	4.20	3.42	7.3	H07 RN-F 6G 1.5
JP50369	MultiCut 45/2 M	45	10	3/PE~230/400	4.84	3.93	7.9	H07 RN-F 6G 1.5
JP50375	MultiCut 75/2 M	49	17	3/PE~230/690	7.70	6.60	13.2/7.7	H07 RN-F 6G 1.5
JP50377	MultiCut 76/2 M	55	13	3/PE~230/690	7.70	6.60	13.2/7.7	H07 RN-F 6G 1.5
JP50352	MultiCut 20/2 M PLUS EX	24	18	3/PE~230/400	2.40	1.91	4.0	H07 RN-F 6G 1.5
JP50355	MultiCut 25/2 ME, EX	24	17	1/N/PE~230 V	2.70	2.04	12.0	H07 RN-F 6G 1.5
JP50359	MultiCut 35/2 M, EX	35	16	3/PE~230/400	3.70	3.04	6.6	H07 RN-F 6G 1.5
JP50365	MultiCut 36/2 M, EX	38	16	3/PE~230/400	4.20	3.42	7.3	H07 RN-F 6G 1.5
JP50371	MultiCut 45/2 M, EX	45	10	3/PE~230/400	4.84	3.93	7.9	H07 RN-F 6G 1.5
JP50376	MultiCut 75/2 M, EX	49	17	3/PE~400/690	7.70	6.60	13.2/7.7	H07 RN-F 10G 2,5
JP50378	MultiCut 76/2 M, EX	55	13	3/PE~400/690	7.70	6.60	13.2/7.7	H07 RN-F 10G 2,5
JP50362	MultiCut 35/2 M Tan, EX	69	16	3/PE~230/400	3.70	3.04	6.6	H07 RN-F 6G 1.5
JP50368	MultiCut 36/2 M Tan, EX	77	16	3/PE~230/400	4.20	3.42	7.3	H07 RN-F 6G 1.5
JP50374	MultiCut 45/2 M Tan, EX	86	10	3/PE~230/400	4.84	3.93	7.9	H07 RN-F 6G 1.5



JUNG PUMPEN GmbH | 33803 Steinhagen | Germany | Phone +49 5204 170 | info@jung-pumpen.de | www.jung-pumpen.com

PENTAIR and PENTAIR JUNG PUMPEN are trademarks, or registered trademarks of Pentair or its subsidiaries in the United States and/or other countries.
© 2021 Pentair Jung Pumpen