



Lifting stations  
**POWERFUL AND DEPENDABLE**



## THE FULL RANGE

# Lifting stations

Lifting stations are designed to dispose of wastewater in a safe and reliable way in line with relevant standards. They come into their own wherever wastewater originating below the backflow level needs to be pumped to the nearest collecting pipe. This is often the case when bathrooms or toilets are renovated in houses or blocks of flats.

Jung Pumpen has the right lifting station for every type of wastewater, whether

- **faecal-free**

- **faecal, or**

- **condensate**

as well as for a variety of locations, such as

- **in cellars**

- **on, or under, the cellar floor**

- **in bathrooms**

- **in a system duct, or**

- **directly mounted**

For more than 90 years now, Jung Pumpen has stood for quality and reliability. All products are well designed, user-friendly, easy to fit and clean and, above all, largely insusceptible to repairs. Please refer to the practical table overleaf which shows the range of uses and pumping performance of our lifting stations. Just a short overview puts you in the picture!

All products with a potential-free contact (WCfix plus, Hebefix plus, Hebefix extra, K2 plus and alarm units) can be linked to a smart home system with a **radio sensor (JP47209)**.



## PRODUCT OVERVIEW:

### K2 Plus

Condensate pump for pumping condensate from gas and oil condensing boilers, air-conditioning, dehumidifiers or cooling appliances.



### WCfix

Sewage lifting stations for disposing of faecal wastewater.



### Hebefix

Above floor tanks for faecal-free wastewater; even possible to discharge hot water up to 80°C (model 100 H).



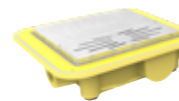
### Baufix

Underfloor collecting sumps for disposing of faecal-free wastewater from washbasins, showers, sinks or washing machines.



### Plancofix

Floor drainage pumps for draining barrier-free showers.



The QR code is directly linked to the product page on our website. Refer to this for all our technical literature as well as helpful explanatory videos and clips about our products.



Are you looking for a compact condensate pump with a modern design whose size and appearance blend perfectly with your surroundings? The reliable and quiet K2 makes for easy and space-saving installation, either on the wall or on the floor.

## K2 PLUS - THE MODEL:



### K2 Plus

**Reliable.**

The level of the water in the tank is precisely monitored by the float switch. This means that the pump always switches itself on and off at the right time.

JP46589

H max: 3,5 m

Q max: 8 l/min



## CONDENSATE PUMP

# K2 Plus

The K2 plus is a condensate pump for versatile use to pump condensate from gas and oil condensing boilers, air-conditioning, dehumidifiers or cooling appliances.

## YOUR BENEFITS:



### SO EASY!

If the discharge pipe needs to be removed, the backflow prevention valve ensures that it does not need to be emptied first. The bayonet joint means that you do not even need tools for this purpose.



### EASY TO MAINTAIN

No need to take the unit off the wall for cleaning and maintenance - the new turn-lock fasteners allow the bottom of the tank to be easily loosened and removed.



### NO NEED TO WORRY ABOUT FAULTS

The indicator light shows you any time whether your K2 is operational or whether there is a fault.

### CLOG FREE

Condensate always contains small particles. The sand trap under the inlets keeps them from entering the pump's hydraulic system.

### YOU ARE STILL IN CONTROL

The test run button lets you start a test run at any time you wish.

## WCfix - THE MODELS:



### WCfix Plus

#### The adaptable solution.

For pre-wall installation or direct connection to the back of a floor-mounted toilet. Watchdog timer with acoustic alarm.

JP45367

H max: 6 m

Q max: 12,5 m<sup>3</sup>/h



### WCfix 260

#### The compact solution.

This compact device can be easily installed behind a floor-mounted toilet. It comes ready to plug in and operates on a fully automatic basis, triggered by the inflow of wastewater.

JP09268

H max: 4 m

Q max: 8 m<sup>3</sup>/h



## SEWAGE LIFTING STATIONS

# WCfix

For disposing of faecal wastewater from toilets. In addition to a toilet with a flush volume of at least 6 l, you can also connect a bidet, a shower and a washbasin in the same room.

When installed below the backup level, the device also provides anti-flooding protection.



Are you planning to renovate and make an extra bathroom? If the number of users is small and there is an additional WC above the backflow level, then WCfix is the ideal lifting station with its quiet operation. It goes without saying that it is easy to operate and maintenance-friendly.

## YOUR BENEFITS WITH THE WCfix PLUS:

### ● HIGH PERFORMANCE

The WCfix plus offers a maximum head of 9 metres! This beats every other rival product.

### ● ALSO FOR CONNECTING A FLOOR LEVEL SHOWER

### ● IMMEDIATE ALARM INFO

The integrated watchdog timer warns in case of a malfunction.

### ● LOW RISK OF BLOCKAGE

The centrifugal impeller with a free passage of 20 mm enables large impurities in your wastewater to be discharged without any problem.



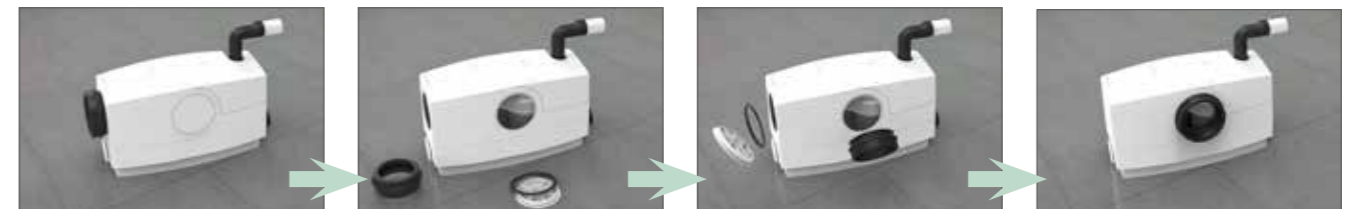
### ● QUICK EMERGENCY DISCHARGE

In the event of motor failure, you can empty your WCfix yourself in next to no time.



### ● EASY TO MAINTAIN

The motor is easy to remove for maintenance, without emptying the discharge pipe.



### ● QUICK CHANGE ARTIST

Conversion in next to no time from wall duct installation to direct mounting behind the WC.

## HEBEFIX - THE MODELS:



### Hebefix Mini

**The flexible - with various options for inlet pipe and pressure pipe.**

Suitable also for the disposing of hot water up to 50° C.

Tank volume: 3 l.

Delivery date on request.

JP48727

H max: 5,3 m

Q max: 4,3 m<sup>3</sup>/h



### Hebefix

**The classic - for wall or floor mounting.**

Can optionally be supplied with an alarm unit or washing machine stop.

Tank volume: 26 l.

JP50210

H max: 8 m

Q max: 11,5 m<sup>3</sup>/h



### Hebefix Extra

**The specialist - for aqueous solutions with a salt content of up to 10 % and condensate.**

Integrated control unit with watchdog timer and acoustic alarm.

Tank volume: 19 l.

JP45757

H max: 6 m

Q max: 5 m<sup>3</sup>/h



### Hebefix Plus

**The allrounder - the sewage lifting station supplied ready to plug in.**

Including control system and watchdog timer with acoustic alarm.

Tank volume: 19 l.

JP44544

H max: 7 m

Q max: 6,5 m<sup>3</sup>/h



### Hebefix 100 H

**The hot water specialist - for large wastewater volumes and hot water up to 80° C.**

Can optionally be supplied with an alarm unit or washing machine stop.

Tank volume: 75 l.

JP09348

H max: 13 m

Q max: 29 m<sup>3</sup>/h



### Hebefix 200

**The voluminous solution - for heavier wastewater flows.**

It has no problem coping with even a large sewage quantity. Single or duplex unit.

Tank volume: 240 l.

JP48188 (Hebefix 200-32)

JP48189 (Hebefix 200-50)

H max: 13 m

Q max: 31 m<sup>3</sup>/h



## ABOVE FLOOR TANKS

# Hebefix

Above floor tanks for disposing of faecal-free wastewater from washing machines, washbasins, sinks, showers, bathtubs, bidets, air conditioning or cooling devices. Disposal of aggressive wastewater (e.g. from water softening plants or hot water) also possible. Installation above or below the backflow level.



Do you wish to discharge faecal-free waste-water from a kitchen or bathroom with a floor-mounted tank which is not at all conspicuous in your newly renovated rooms? Either because it is concealed in a wall duct or because it fits perfectly under your washbasin? Choose your model from the Hebefix range!

## YOUR BENEFITS WITH HEBEFIX PLUS:



### THE VERSATILE LIFTING STATION

Whether fitted in a wall duct or with a direct connection - compact dimensions, with discharge outlets either on the right or left-hand side, and five connection options, make this a versatile space miracle. The discharge outlet can easily be changed over from the right to left-hand side.

### STAYS CLEAN

Flushing ports in the hydraulic system ensure that the tank is continually cleaned.

## BAUFIX - THE MODELS:



### Baufix 50

#### Also for shallow recesses.

Its compact size and the arrangement of additional inlets also enables it to be used in shallow recesses.

Tank volume: 40-55 l.

JP09335

H max: 7 m

Q max: 6,5 m<sup>3</sup>/h



### Baufix 100

#### The powerful lifting station.

The pump to be used can be selected according to the volume of wastewater and the particle size of the impurities it contains. It is authorised for use even in groundwater endangered areas.

Tank volume: 70 l.

JP47214

H max: 13 m

Q max: 28 m<sup>3</sup>/h



### Baufix 200

#### With a large storage volume.

Pressure-resistant tank for use as a single or duplex unit. It is authorised for use even in groundwater endangered areas.

Tank volume: 240 l.

JP48186 (Baufix 200-32)

JP48187 (Baufix 200-50)

H max: 13 m

Q max: 31m<sup>3</sup>/h



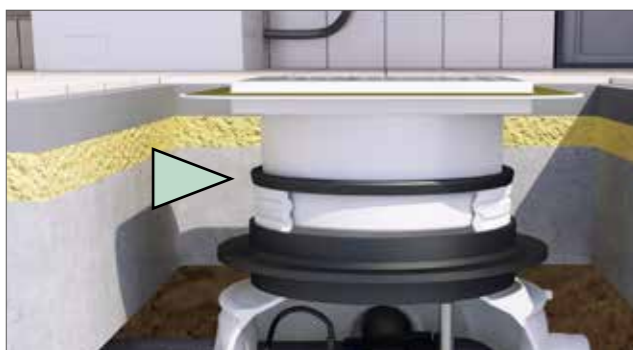
## UNDERFLOOR SUMPS

# Baufix

Three models of collecting tanks for use as underfloor tanks are available. These are used in the cellar below the backflow level for discharging faecal-free wastewater from washing machines, washbasins, sinks and showers, and condensate.

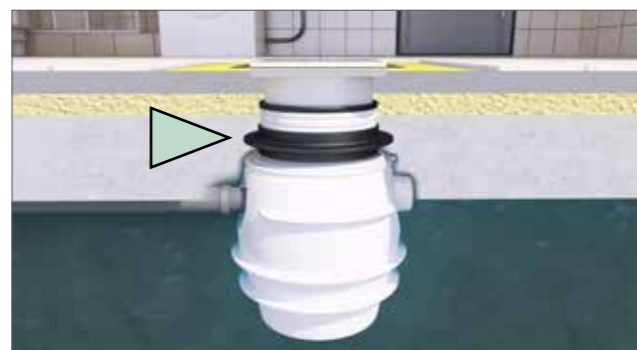
Using the cellar as a practical laundry room and reliably disposing of wastewater - three variants of the Baufix can help you here. Fitted in your cellar shaft, the Baufix reliably discharges your wastewater out of the building, optionally even with a groundwater seal.

## YOUR BENEFITS:



### LEVEL ADJUSTMENT

This ensures that the Baufix is infinitely adjustable to the height of your cellar floor.



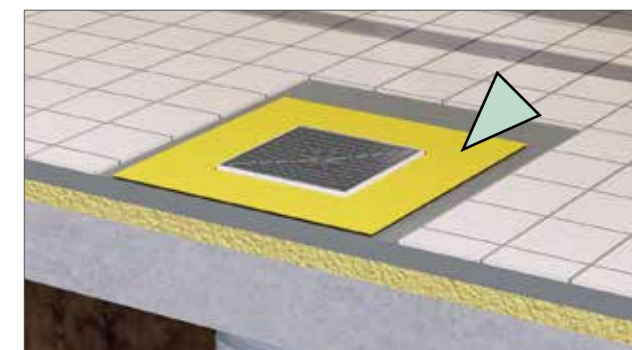
### GROUNDWATER PROOF

If there is a danger of groundwater pressing in underneath the floor plate, the **Baufix 100 and 200** can be fitted with a reliable groundwater seal (optional).



### EASY CLEANING AND VISUAL INSPECTION OF THE PUMP

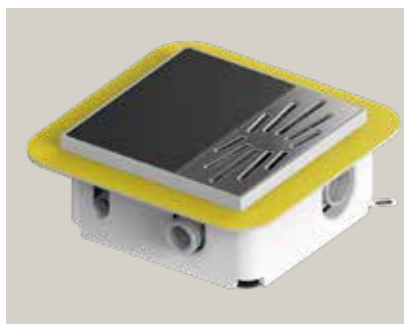
A guide rail system can be used to conveniently lift the pumps in the **Baufix 100 and 200** out of the sump (optional).



### WET ROOM CONNECTION

The cover frame with the sealant collar makes this possible. This is included in the supply package.

## PLANCOFIX - THE MODELS:



### Plancofix

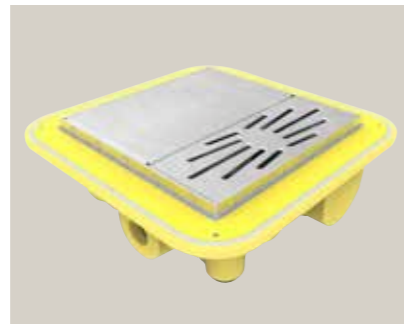
#### The powerful lifting station.

This is fitted into the bathroom floor in a recess measuring about 40 x 40 x 12 cm, with an **installation depth of 10.5 cm**. The Plancofix can then be tiled and perform its work hidden away under your feet while you enjoy a relaxing shower.

JP44685

H max: 2,3 m

Q max: 30 l/min



### Plancofix Plus

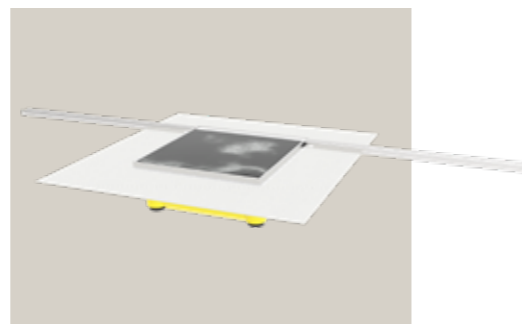
#### The flat design for quiet operation.

Less can sometimes be more. The Plancofix plus requires an **installation depth of only 9 cm**. It can be reduced to 8 cm by removal of the insulation tray. The low noise level of under **30 dB(A)** makes it almost inaudible and so suitable for multi-unit homes or blocks of flats.

JP47014

H max: 1,3 m

Q max: 25 l/min



### Plancofix Line

#### With shower channel.

In terms of installation depth and noise development, the Plancofix Line scores with the same data as the Plancofix Plus. The supplied shower channel is 1.20 m long and can be shortened individually. The slope only has to run in the direction of the channel on one side. Advantage: fewer tile cuts - more harmonious overall appearance.

JP50177

H max: 1,3 m

Q max: 25 l/min



## FLOOR DRAIN PUMPS

# Plancofix

For draining floor-level, barrier-free showers, particularly in existing buildings.

Discreetly fitted in the floor of your bathroom, the floor drainage pumps discharge your shower water without any problem to the next drain.



Your shower not only exudes water but also the charm of long past decades? Then give your bathroom a facelift - and update it with a modern floor-level shower without any trip hazards. There are two models of Plancofix floor drainage pumps to choose from.

### ● PLANCOFIX, PLANCOFIX PLUS AND PLANCOFIX LINE IN COMPARISON:



## YOUR BENEFITS:

### BARRIER-FREE SHOWERS - STYLISH AND PRACTICAL

#### ● USER-FRIENDLY

Taking a shower without any trip hazards also makes it easier for the elderly to have a shower without any difficulty.

#### ● EASY TO CLEAN

Corners that are easy to get into make light work of cleaning your shower each day.

















#### ● A NEW FEELING OF SPACE

The seamlessly integrated shower area does not detract from the existing space in your bathroom. Your bathroom looks bigger as a result.

# APPLICATIONS FOR LIFTING STATIONS

Faecal wastewater

Faecal-free wastewater

|                                                                                                                  | Status WC | Wall WC | Bidet | Washing basin | Shower | Bathtub | Sink | Dishwasher | Washing machine | Condensate    | water soften. plant | cooling dev./ air condit. | Hot water | H max (m) | Q max (l/min) | Discharge outlet |
|------------------------------------------------------------------------------------------------------------------|-----------|---------|-------|---------------|--------|---------|------|------------|-----------------|---------------|---------------------|---------------------------|-----------|-----------|---------------|------------------|
|  WCfix Plus JP45367           | +         | +       | +     | +             | +      |         |      |            |                 |               |                     |                           |           | 9 m       | 208 l         | DN 25, 32        |
|  WCfix 260 JP09268            | +         |         | +     | +             | +      |         |      |            |                 |               |                     |                           |           | 4 m       | 133 l         | DN 25, 32        |
|  Hebefix Mini JP48721         |           |         | +     | +             | +      | +       | +    |            |                 |               | +                   | +                         | +         | 5.3 m     | 72 l          | DN 32            |
|  Hebefix Plus JP44544         |           |         | +     | +             | +      | +       | +    | +          |                 |               |                     | +                         |           | 7 m       | 108 l         | DN 32            |
|  Hebefix Extra JP45757        |           |         | +     | +             | +      | +       | +    | +          |                 |               | +                   | +                         |           | 6 m       | 83 l          | DN 32            |
|  Hebefix JP50210              |           |         | +     | +             | +      | +       | +    | +          |                 | U3 KS spezial | +                   | +                         |           | 8 m       | 191 l         | DN 32            |
|  Hebefix 100 JP09319          |           |         | +     | +             | +      | +       | +    | +          |                 | U3 KS spezial | +                   | +                         |           | 13 m      | 466 l         | DN 40            |
|  Hebefix 100 H JP09348        |           |         | +     | +             | +      | +       | +    | +          |                 |               |                     |                           | +         | 13 m      | 466 l         | DN 40            |
|  Hebefix 200 JP48188/JP48189  |           |         | +     | +             | +      | +       | +    | +          |                 | U3 KS spezial | +                   | +                         |           | 13 m      | 516 l         | DN 32/50         |
|  Baufix 50 JP09335           |           |         | +     | +             | +      | +       | +    | +          |                 | U3 KS spezial | +                   | +                         |           | 7 m       | 108 l         | DN 32            |
|  Baufix 100 JP47214         |           |         | +     | +             | +      | +       | +    | +          |                 | U3 KS spezial | +                   | +                         |           | 13 m      | 466 l         | DN 32            |
|  Baufix 200 JP48186/JP48187 |           |         | +     | +             | +      | +       | +    | +          |                 | U3 KS spezial | +                   | +                         |           | 13 m      | 516 l         | DN 32/50         |
|  Plancofix JP44685          |           |         |       |               | +      |         |      |            |                 |               |                     |                           |           | 2.3 m     | 30 l          | DN 25            |
|  Plancofix Plus JP47014     |           |         |       |               | +      |         |      |            |                 |               |                     |                           |           | 1.3 m     | 25 l          | DN 25            |
|  Plancofix Line JP50177     |           |         |       |               | +      |         |      |            |                 |               |                     |                           |           | 1.3 m     | 25 l          | DN 25            |
|  K2 Plus JP46589            |           |         |       |               |        |         |      |            |                 | +             |                     |                           |           | 3.5 m     | 8 l           | 11/13 mm         |

The Plancofix was specially built to drain showers (not a lifting station as defined by DIN EN 12050-2)

The Plancofix was specially built to drain showers (not a lifting station as defined by DIN EN 12050-2)

The Plancofix was specially built to drain showers (not a lifting station as defined by DIN EN 12050-2)

