

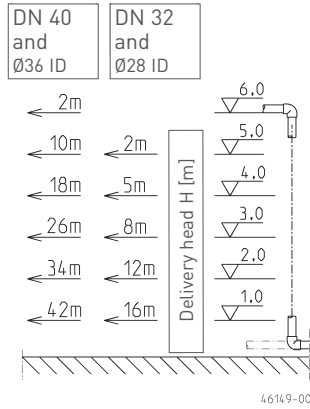
JUNG PUMPEN WCFIX PLUS



RESIDENTIAL TECHNOLOGY

COMPACT SEWAGE LIFTING STATION

Max. horizontal length of pressure pipe incl. 2 elbows



THE NEW ALL-ROUNDER - WCFIX PLUS

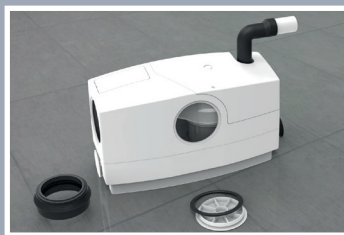
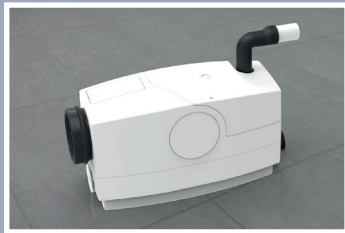
One unit for all applications! Whether hidden behind a modern front-wall system or connected directly to a floor-standing toilet: With the **WCFIX plus**, all types of connection can be made with perfect ease. And it goes without saying that all of the necessary installation accessories are provided. Despite the reliable wastewater hydraulics, if the unit is not used according to the instructions (e.g. if hygiene articles are disposed of), then blockages may still occur. This problem can be dealt with very quickly, however, since the integrated pump is particularly easy to disassemble.

Four different inlet openings provide flexible connection options. This means that a shower, a washbasin, a bidet and a toilet can be connected without any problems. And all of them can be connected at the same time if you like!



Hands-free operations!

Carrying out maintenance and rectifying faults has never been so quick, clean and trouble-free. Pump is disassembled in seconds.



Outstanding adaptability

A new application in just a few easy steps. Transforms from a front-wall lifting station to a direct connection lifting station in an instant!

FOR THE PERFECTIONIST

- ▶ For installation behind a front-wall or with a direct connection (to the toilet)
- ▶ Sophisticated design with easy-to-clean surfaces
- ▶ With integrated alarm
- ▶ Extremely quiet operation
- ▶ Can be used to replace units made by other common manufacturers
- ▶ Ventilation valve with activated carbon filter
- ▶ Easy disassembly of the motor with no need to empty the pressure pipe
- ▶ Suitable for toilet flush volume of 6 l or greater
- ▶ Switch-on level of pump 75 mm or greater
- ▶ Integrated check valve
- ▶ Compact sewage lifting station in acc. with DIN EN12050-3
- ▶ Including UK plug



TECHNICAL DATA

Voltage Volt	Motor rating P1 (W)	Weight kg	Hmax m	Qmax l/min
230	720	7	9	208
Dimensions (h x w x d) in mm:	Inlets mm	Max. water temp.	Code no.	
280x460x170	1 x Ø40 2 x Ø50 1 x Ø100	35 °C	JP48517	

JUNG PUMPEN GMBH

33803 Steinhagen · Germany · Tel. +49 5204 170 · Fax +49 5204 80 368 · info@jung-pumpen.de · www.jung-pumpen.de